

Fig 1	9.11.1.4 1.6.3	5 10	15
Fig 2	7.1.1	6	6
Fig 3	9.1.4.2 8.32.4	4 11	15
Fig 4	2.1.4	7	7
Fig 5	9.1.3.2 1.1.4	4 2	6
Fig 6	2.1.3	5	5
Fig 7	5.1.1	17	17
Fig 8	7.1.1	6	6
Fig 9	9.1.3.4 9.1.3.4 1.1.2	8 8 3	19
Fig 10	9.1.3.2 8.48.2 9.1.4.2	4 11 4	19
<b>Total K = 115</b>			

Created Using Aresti Cassidy 2010 – Mise en forme JP POURSAAC 05/01/2010

Pilote \_\_\_\_\_  
A/C \_\_\_\_\_

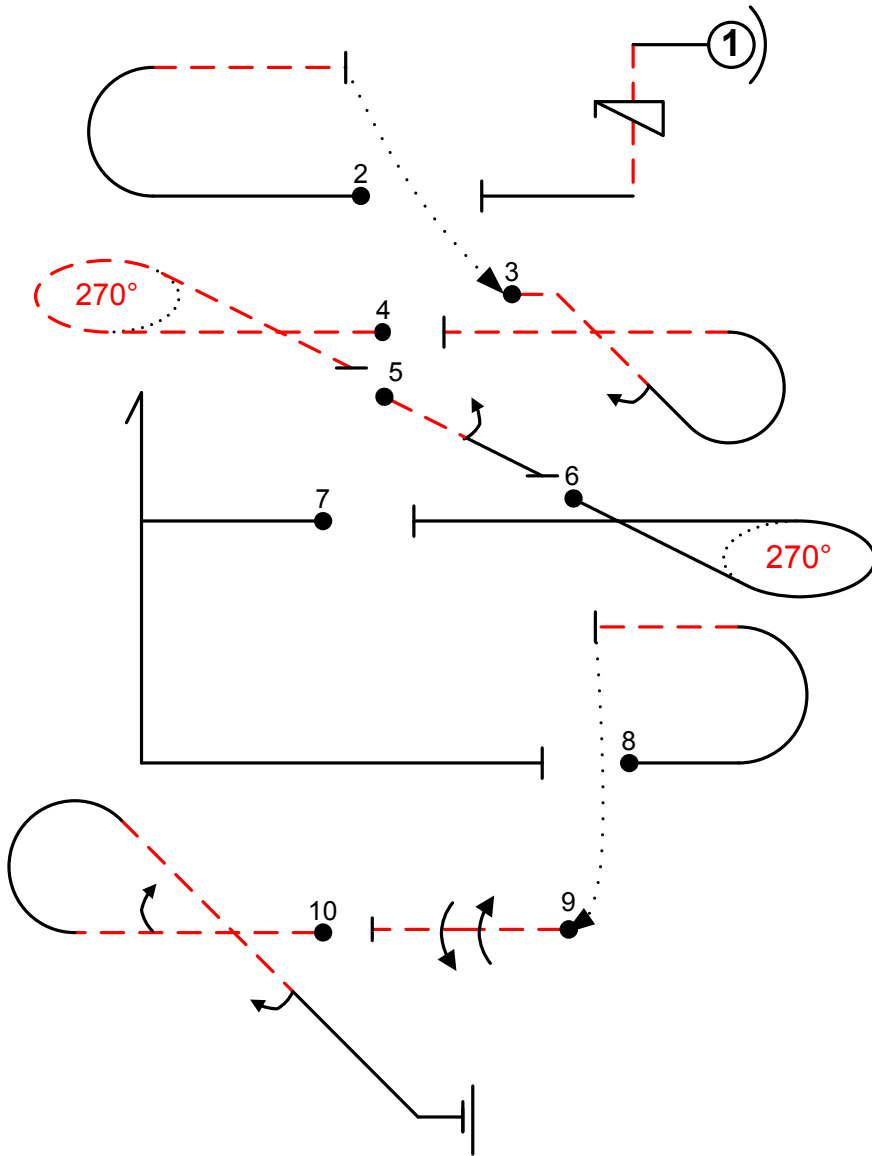


Fig 1	9.11.1.4 1.6.3	5 10	15
Fig 2	7.1.1	6	6
Fig 3	9.1.4.2 8.32.4	4 11	15
Fig 4	2.1.4	7	7
Fig 5	1.1.4 9.1.3.2	2 4	6
Fig 6	2.1.3	5	5
Fig 7	5.1.1	17	17
Fig 8	7.1.1	6	6
Fig 9	9.1.3.4 9.1.3.4 1.1.2	8 8 3	19
Fig 10	9.1.4.2 9.1.3.2 8.48.2	4 4 11	19
<b>Total K = 115</b>			

Created Using Aresti Cassidy 2010 – Mise en forme JP POURSAAC 05/01/2010

Pilot \_\_\_\_\_  
A/C \_\_\_\_\_

**CONNU non alimenté dos**

Created Using Aresti Cassidy 2010 – Mise en forme JP Poursac 05/10/2010

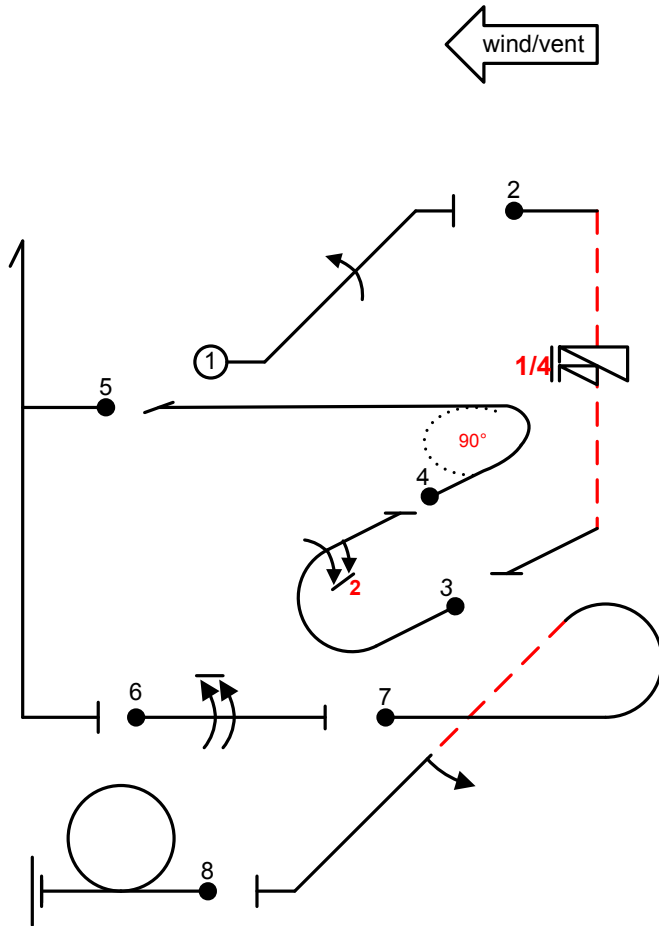
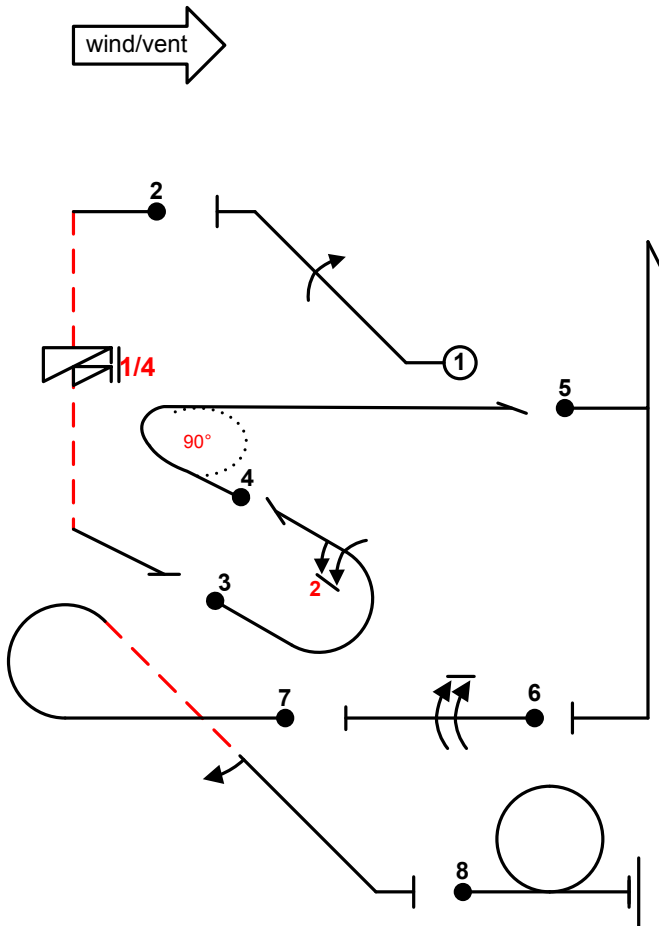


Fig 1	9.1.2.4 1.2.1	10 7	17
Fig 2	1.6.3 9.11.1.5	10 4	14
Fig 3	9.2.3.6 7.2.1	12 6	18
Fig 4	2.2.3	3	3
Fig 5	5.1.1	17	17
Fig 6	9.1.3.8 1.1.1	12 2	14
Fig 7	9.1.4.2 8.42.1	4 10	14
Fig 8	7.5.1	10	10
<b>Total K = 107</b>			

Pilot \_\_\_\_\_  
 A/C \_\_\_\_\_

Created Using Aresti Cassidy 2010 — Mise en forme IP Poursac 05/01/2010



17	10 7	9.1.2.4 1.2.1	Fig 1
14	10 4	1.6.3 9.11.1.5	Fig 2
18	12 6	9.2.3.6 7.2.1	Fig 3
3	3	2.2.3	Fig 4
17	17	5.1.1	Fig 5
14	12 2	9.1.3.8 1.1.1	Fig 6
14	4 10	9.1.4.2 8.42.1	Fig 7
10	10	7.5.1	Fig 8
<b>Total K = 107</b>			

Pilot  
A/C